
Empowering
businesses
through latest
technology and
experienced mind

CONTACT US

EMP 06- THAKUR VILLAGE, KANDIVALI
EAST, MUMBAI - 400 101,
Tel No. +91 98206 30166 / +91 9920 525455



HRS Enterprises

Export Import & Traders



ABOUT US

We are a Mumbai based Export Import & Trading Company formed in 2020. Our head office located in Mumbai, India having associate office in UAE / HONGKONG & AUSTRALIA. We expertise in supplying different types of plastic items and die mould works with precision, on time delivery and complete customer satisfaction.

We also specialise in developing OEM designs at a cost effective price for our clients
TRY US ONCE AND EXPERIENCE THE EXPERIENCE



We stay ahead of
the curve by
leveraging
creativity and
expertise.

PORTFOLIO

WORK WITH HEART

We at HRS Enterprises believe in enjoying what we do, maintaining a good relation with the customers is our primary motto.

RELIABLE SERVICE

With on time delivery, we strive not to compensate on the quality aspect.

GREAT SUPPORT

We don't want to push our ideas on to customers, we simply want to make what they want, there by providing full end to end support from initial stage to final delivery.

OUR MISSION

OUR MISSION IS TO MOVE AHEAD with a unified mission , vision and trust.

Our Vision

TO become one of the most trusted partners by innovation and efficiency for our clients and grow together

Core Values

Our values describe our Beliefs and our conduct both professionally and personally
Following Ethical business principle and bringing efficiency by delivering quality products with at the right value for our partners.

We understand we listen and we deliver !



*"It's not about what's spoken, but
what we deliver that counts"*

OUR PRODUCTS

B
O
N
D
I
N
G



HRS -01



HRS -02



HRS -03



HRS -04



HRS -05



J
U
M
P
E
R

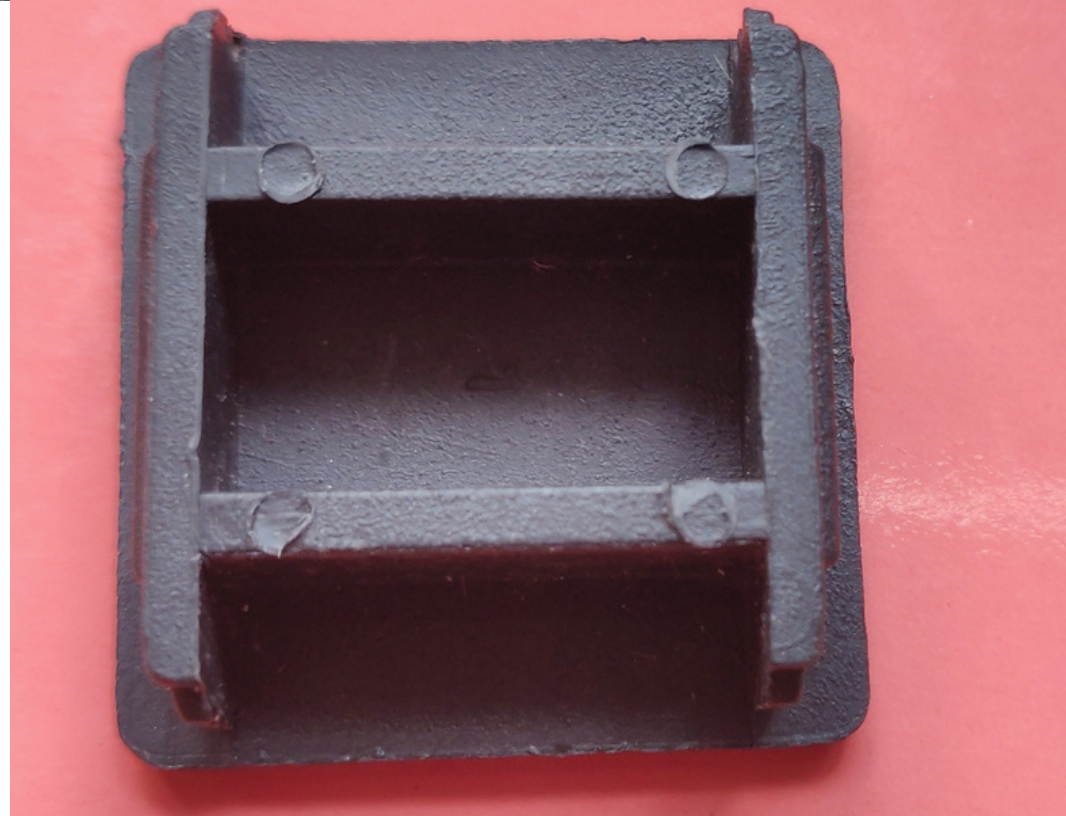


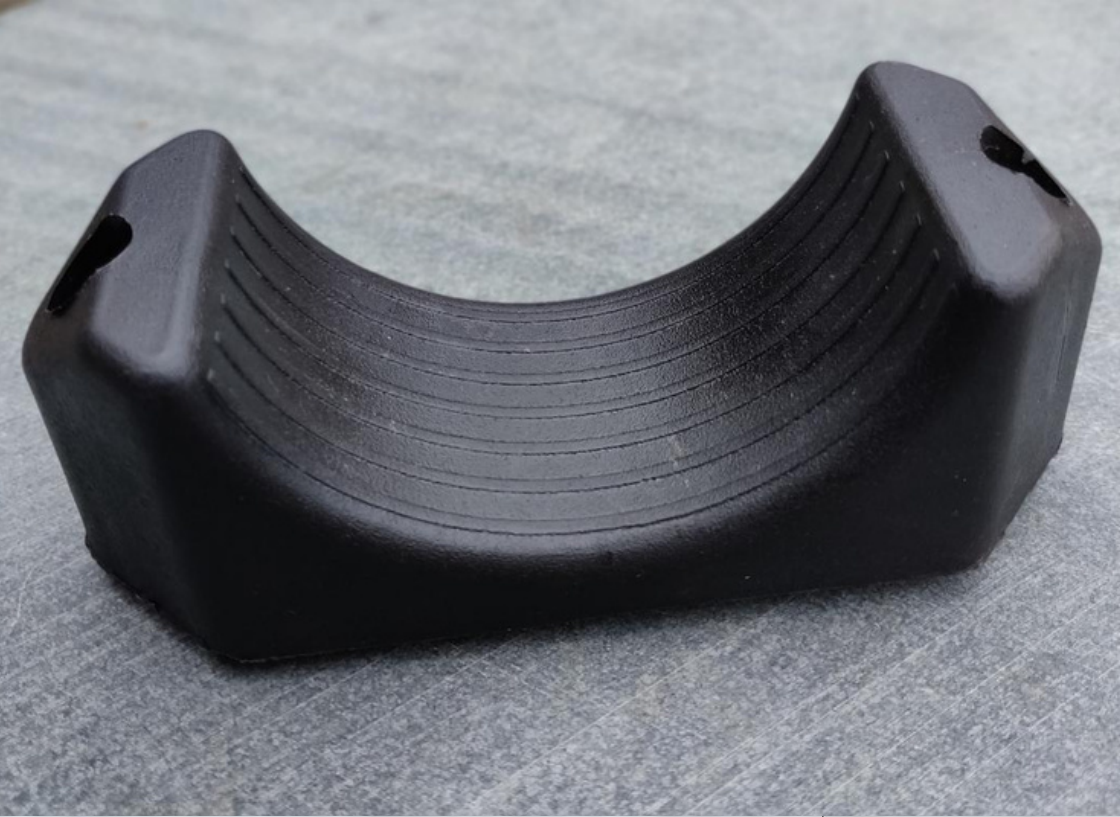
END CAP - 41MM X 21MM

Product Id - HRS-06

END CAP - 41MM X 41MM

Product Id - HRS-07





DOUBLE BOLT CLEAT-07

Product Id - HRS-08



DOUBLE BOLT CLEATS

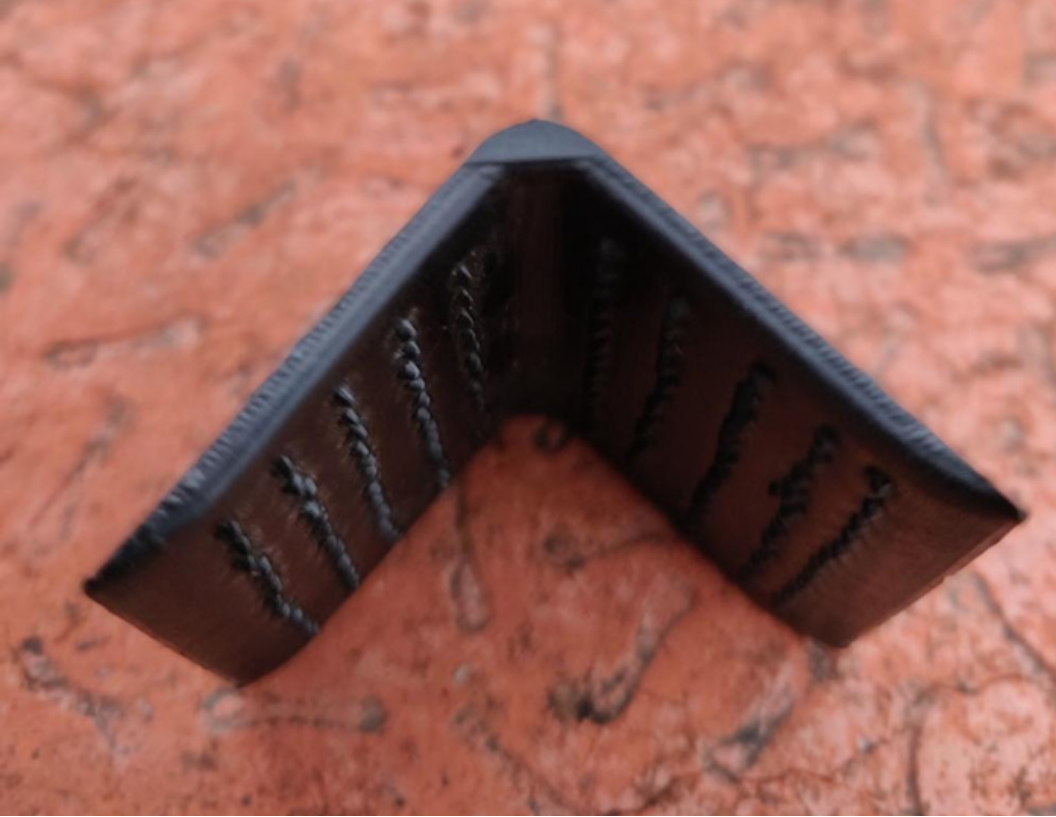


DOUBLE BOLT CLEAT -01
Product Id - HRS-09

DOUBLE BOLT CLEAT -02
Product Id - HRS-10

DOUBLE BOLT CLEAT -03
Product Id - HRS-11

DOUBLE BOLT CLEAT -04
Product Id - HRS-12



PLASTIC CORNER-38MM

Product Id - HRS-13

INSULATORS

Product Id - HRS-14



Size available as per requirement



NYLON BOLT- BLACK

Product Id - HRS-15

NYLON BOLT- WHITE

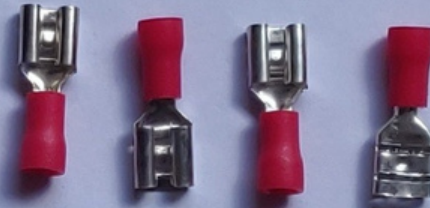
Product Id - HRS-16





6MM PIN INSULATOR

Product Id: HRS-17



1.5 SNAPON INSULATOR

Product Id: HRS-18



1.5-8 RING TYPE INSULATOR

Product Id: HRS-19



2.5-5 RING TYPE INSULATOR

Product Id: HRS-20

Note: Sizes available as per requirement

COPPER TUBULAR LUG



Product Id : HRS-21

Note: Sizes available as per requirement



HRS-22

PLASTIC PLUGS

Product Id - HRS-22

Product Id - HRS-23

Product Id - HRS-24



HRS-23



HRS-24





HRS-25

Edible Oil Tin Containers Spout



PLASTIC SPOUT CAPS



HRS-26

Chemical Irradiated Spout



Note: Sizes available as per requirement

HRS-27



HRS-28



HRS-29



HRS - 30



HRS - 31



HRS - 32



HRS-33



SINGLE BOLT CLEATS

Note: Apart from above products, we are flexible in terms of developing any plastic items as per your requirement. Connect with us at hrsenterprises2014@gmail.com.
Tel +91-9820630166 / + 91 9920525455